

Z1 370Z SINGLE PIECE STAINLESS STEEL UPPER CLUTCH LINE INSTALLATION MANUAL



This Installation Manual is intended for the following models:	
2009-2020	Nissan 370Z
2008-2013	Infiniti G37 (Coupe)
2009-2013	Infiniti G37 (Sedan)

PROLOGUE:

Study these instructions completely before proceeding to assembly. The installer must have a thorough knowledge of automotive systems operation. If unfamiliar with any of the concepts outlined in this instruction, we recommend the installation be completed by a qualified professional.

WARNING!

Extreme caution should be taken when performing maintenance or performance upgrades to your vehicle. Please observe and abide by any Warning or Caution labels placed on the various components and tools used when servicing your vehicle. If you have any questions regarding installation or the various components included with the Z1 Motorsports 370Z Single Piece Stainless Upper Clutch Line, consult with a Professional Mechanic, or contact Z1 Motorsports for more information.

PARTS INCLUDED:

Item	Quantity	Description
1	1	Single Piece Stainless Steel Clutch Line
2	2	Crush Washer
3	2	Banjo Bolt

TOOLS REQUIRED:

- Hydraulic Jack
- (2) 2-Ton (or greater) Jack Stands
- Ratchet
- Ratchet Extension(s)
- Assorted Metric Wrenches
- Assorted Metric Sockets
- Screwdrivers
- Pliers

SAFETY REQUIREMENTS:

- Always wear safety glasses and any necessary protective garments. If using any fluids, chemicals, or solvents, a respirator is recommended.
- Always turn the ignition to the OFF position and disconnect the NEGATIVE battery terminal.
- Always use properly rated jack stands when working under your vehicle.
- Always keep limbs and parts away from moving drivetrain parts.
- Only operate drivetrain in safe space and well-ventilated areas.

BEFORE YOU BEGIN:

Remove contents from the Z1 Motorsports 370Z Single Piece Stainless Upper Clutch Line and verify that ALL necessary hardware is present.

PROCEDURE:

1. Place the transmission in Park position (or in Reverse gear if equipped with a manual transmission). Apply the parking brake.
2. Loosen but do not remove the Lug Nuts on the Driver Side Front Wheel.
3. Locate the proper jacking points on the vehicle's chassis (refer to the Vehicle's Owner's Manual). Raise and support the vehicle using a jack and jack stands.
4. Remove the Driver Side Lug Nuts and Front Wheel.
5. Remove the Plastic Clips and Bolts securing the rearward Fender Liner from the Front Driver Wheel Well and remove the Fender Liner. *Figure 1.*

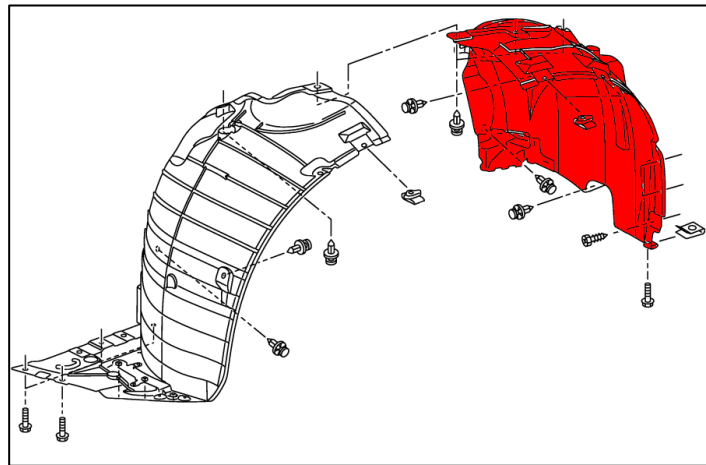


Figure 1

The Z1 Single Piece Stainless Steel Upper Clutch Line will replace all of the highlighted components in *Figure 2* below.

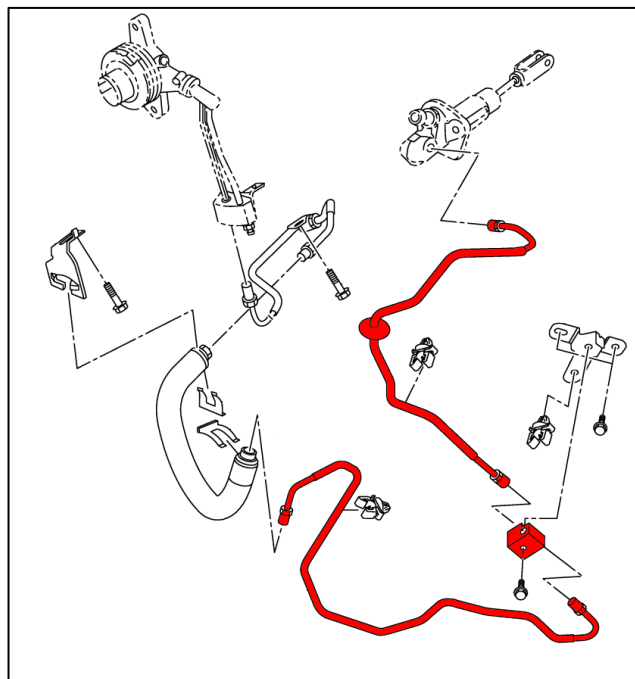


Figure 2

6. Unthread the Clutch Hard Line from the Master Cylinder in the Engine Bay and the Connecting Block. Fluid will leak out, make sure to quickly clean up any spilled fluid as it will damage painted surfaces. *Figure 3.*

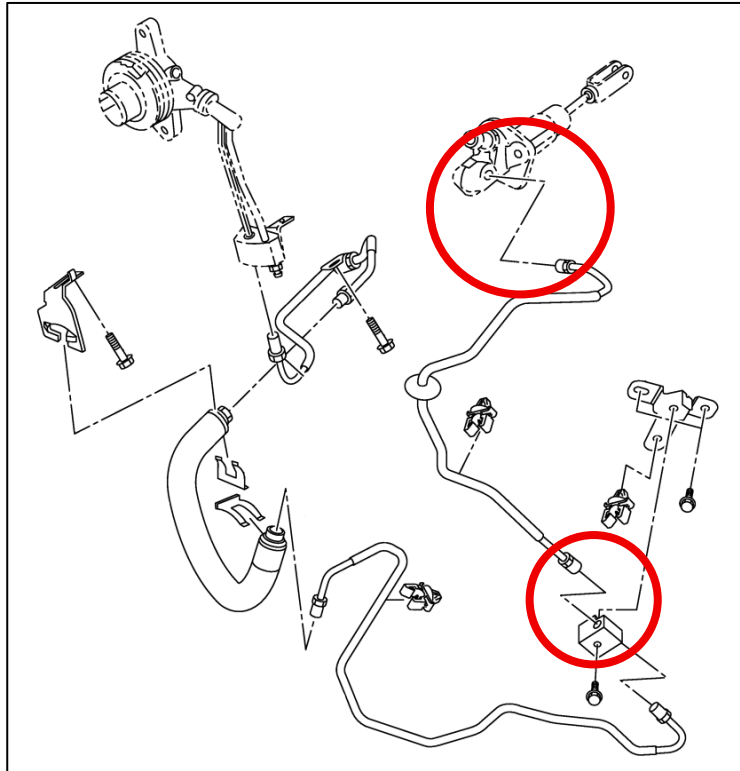


Figure 3

7. Unthread the Lower Clutch Hard Line from the Connecting Block and the Clutch Hose. *Figure 4.*

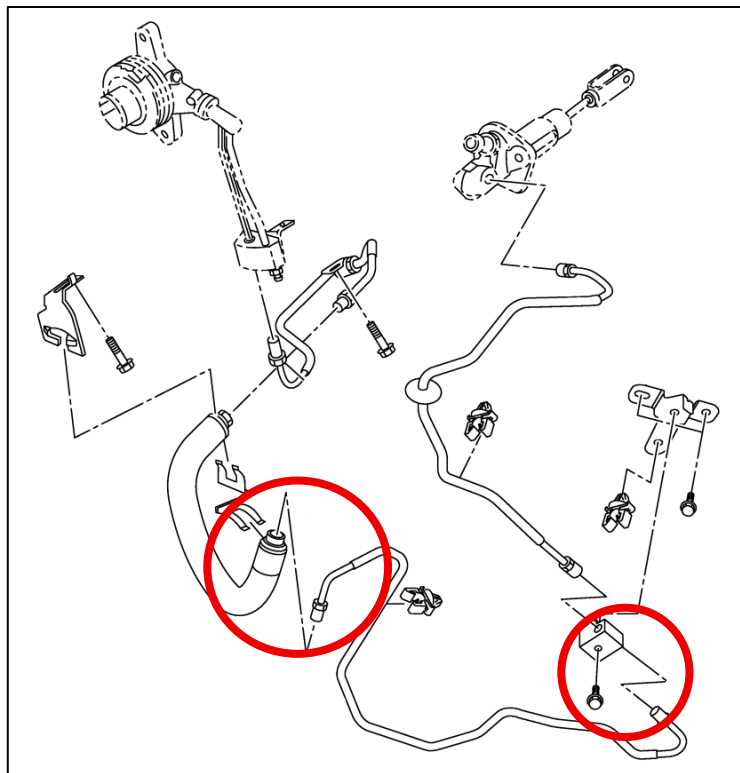


Figure 4

8. Remove any Retaining Clips securing the Clutch Hard Lines and disconnect them from any tabs on the vehicle. Once fully disconnected, remove the Hard Lines from the vehicle. *Figure 5.*

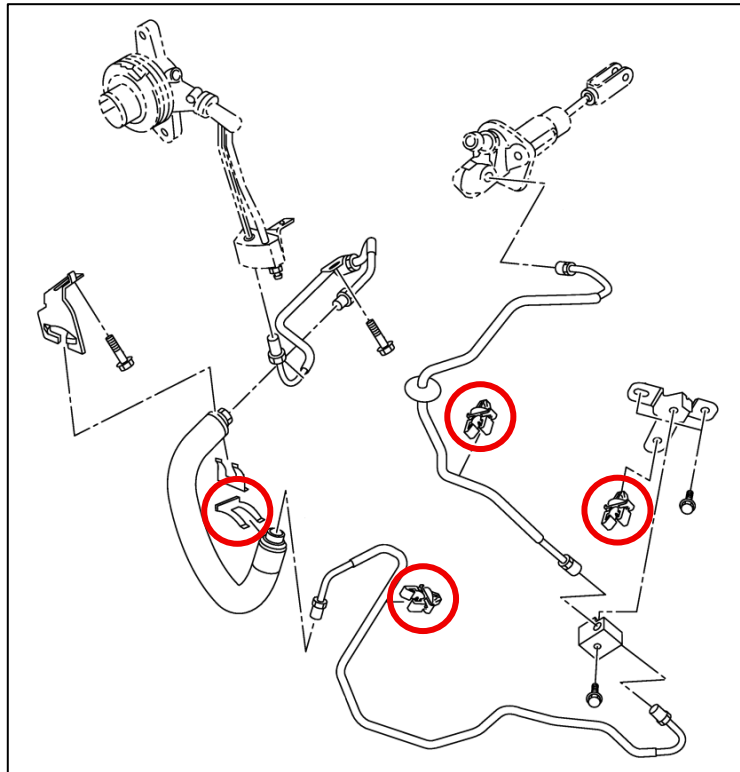


Figure 5

9. Unbolt the Connection Block from the OE Bracket and remove it from the vehicle. *Figure 6.*

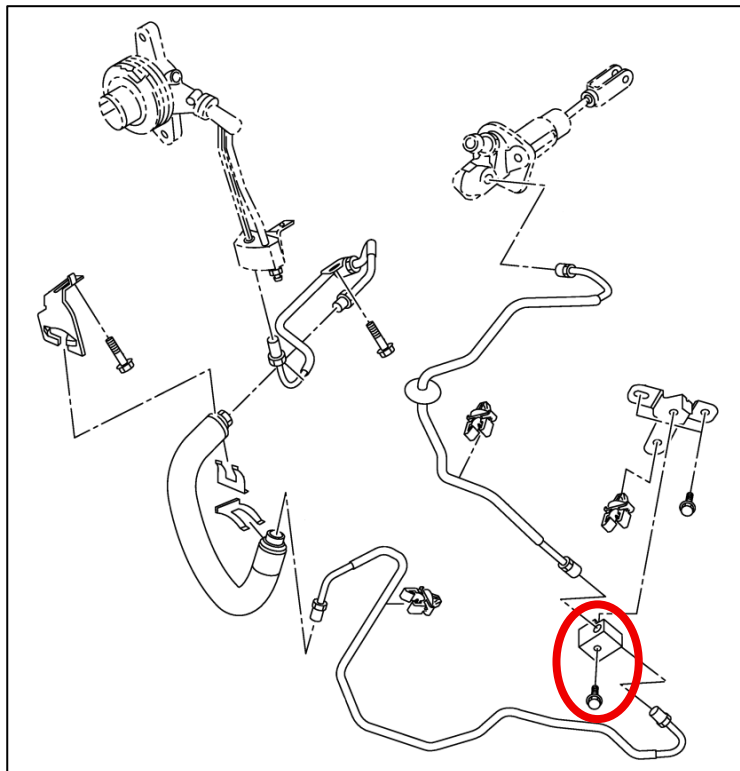


Figure 6

10. Locate the Z1 Single Piece Stainless Steel Upper Clutch Line. Push the Banjo Fitting End of the Line through the Rubber Grommet in the Wheel Well and up towards the Clutch Master Cylinder in the Engine Bay. *Figure 7.*

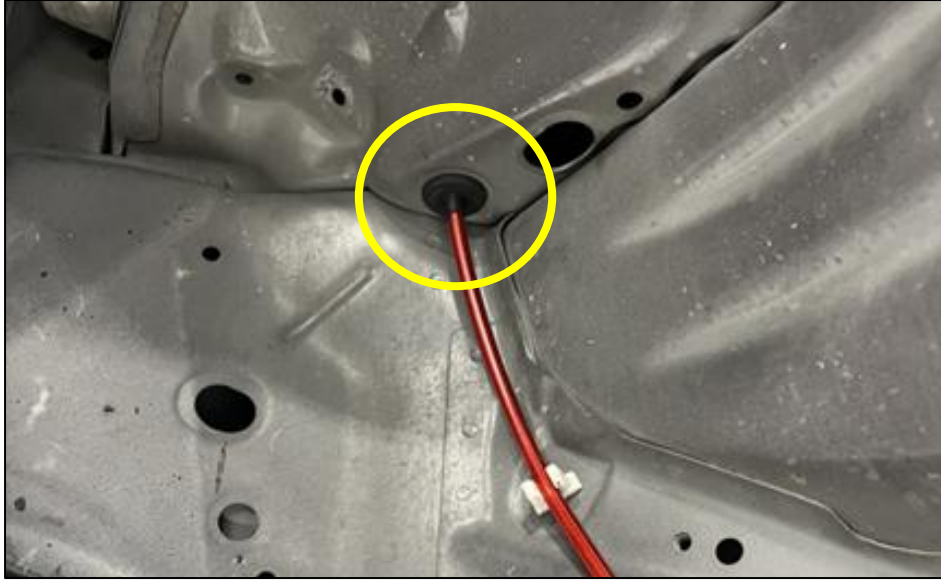


Figure 7

11. Locate the (2) two Banjo Bolts and (2) two Crush Washers. There is (1) one Shorter Banjo Bolt and (1) one Longer Banjo Bolt. The Shorter Banjo Bolt is used for OE Clutch Master Cylinders. The Longer Banjo Bolt will be used for most aftermarket Clutch Master Cylinders.

After determining which Banjo Bolt is needed for your vehicle, place a Crush Washer on the Banjo Bolt and then insert the Banjo Bolt through the fitting of the Clutch Line. Place another Crush Washer on the other side of the Banjo Fitting and thread the Banjo Bolt into the Clutch Master Cylinder. Torque to **12 ft-lbs.** *Figure 8.*

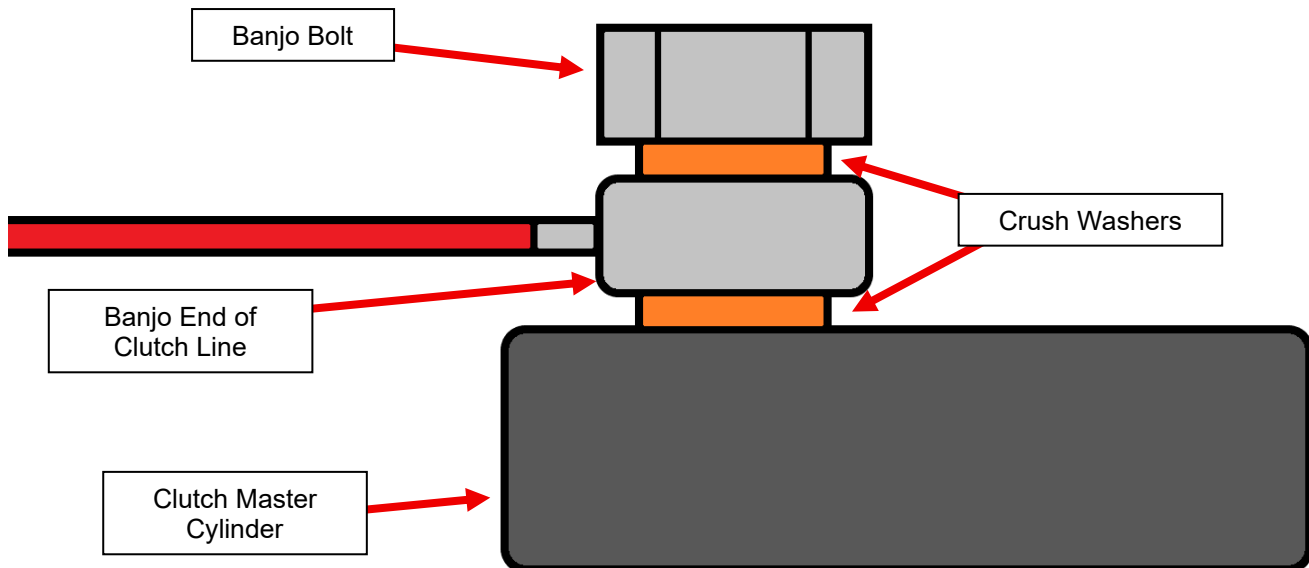


Figure 8

12. Route the Clutch Line similar to *Figure 9* as shown below and use the OE Clips to secure it. Attach the small tab on the Clutch Line to the OE Bracket in the Fender Well.

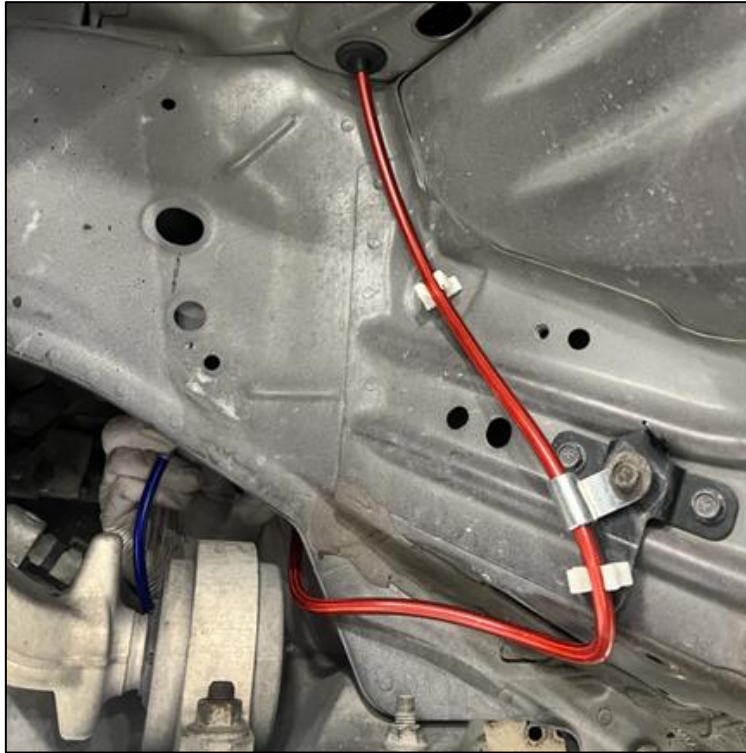


Figure 9

13. Route the Clutch Line Under the frame and up towards the original mount for the Clutch Line. Use the OE Retaining Clip removed in *Step 8* to secure the Clutch Line. *Figure 10*.



Figure 10

14. Connect the Lower Clutch Hose to the threaded end of the Upper Clutch Line. A Z1 Lower Clutch Line is shown below. *Figure 11.*

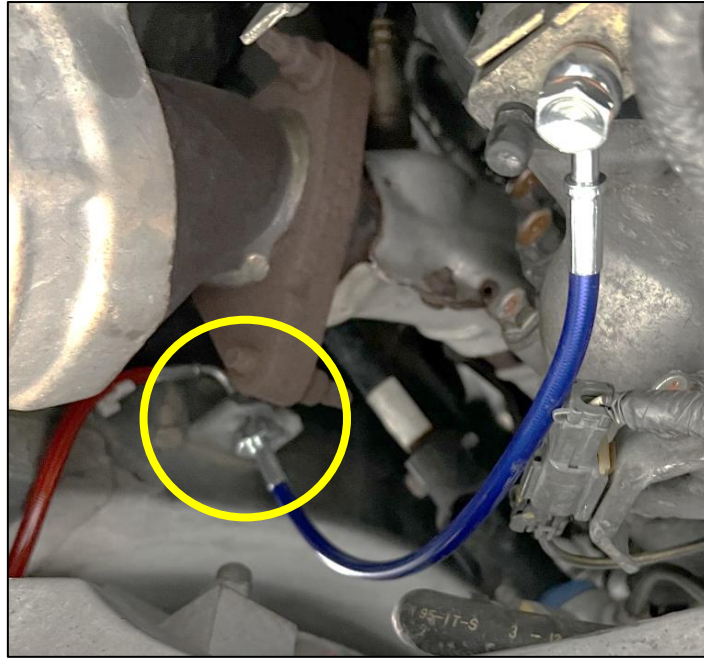


Figure 11

15. Refer to the Factory Service Manual to bleed the Clutch System. Check for any leaks with the new Clutch Hard Line while bleeding.
16. Reinstall the Fender Liner that was removed in *Step 5*.
17. Reinstall the Driver Front Wheel and Lug Nuts.
18. Safely remove the vehicle from jack stands.
19. Take your vehicle for a test drive.

END

Additional Technical Support:
Contact Z1 Motorsports at info@z1motorsports.com
Or call 770-838-7777 between 9am and 6pm ET